

Evidenced-Based Strategy and Selection System

State Systems Development Program Conference

August 20, 2008

Introductions

Anne Rogers

ME SPF-SIG Coordinator

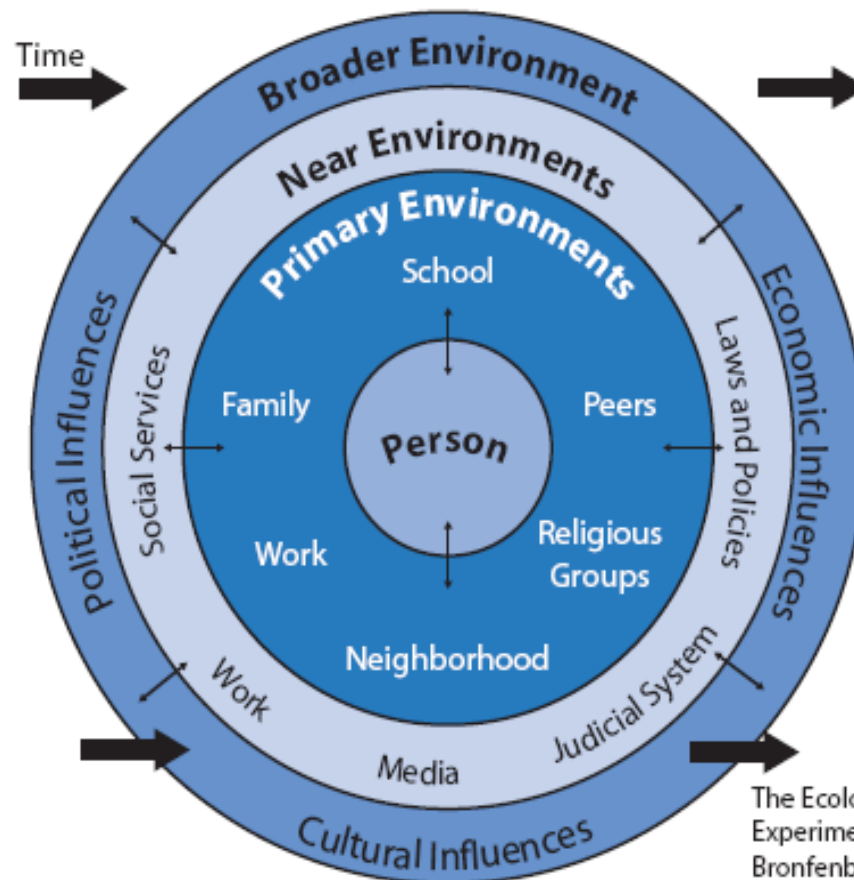
Michelle Ricco

NH SPF-SIG Program Manager

POP Quiz – Question #1

- What are the goals of SPF-SIG?
 - How has the SPF-SIG shifted the way we do prevention?
 - What is an example of Universal Direct/Indirect?
 - What is an example of Selective?
 - What is an example of Indicated?

A Comprehensive Approach For the Academic in You



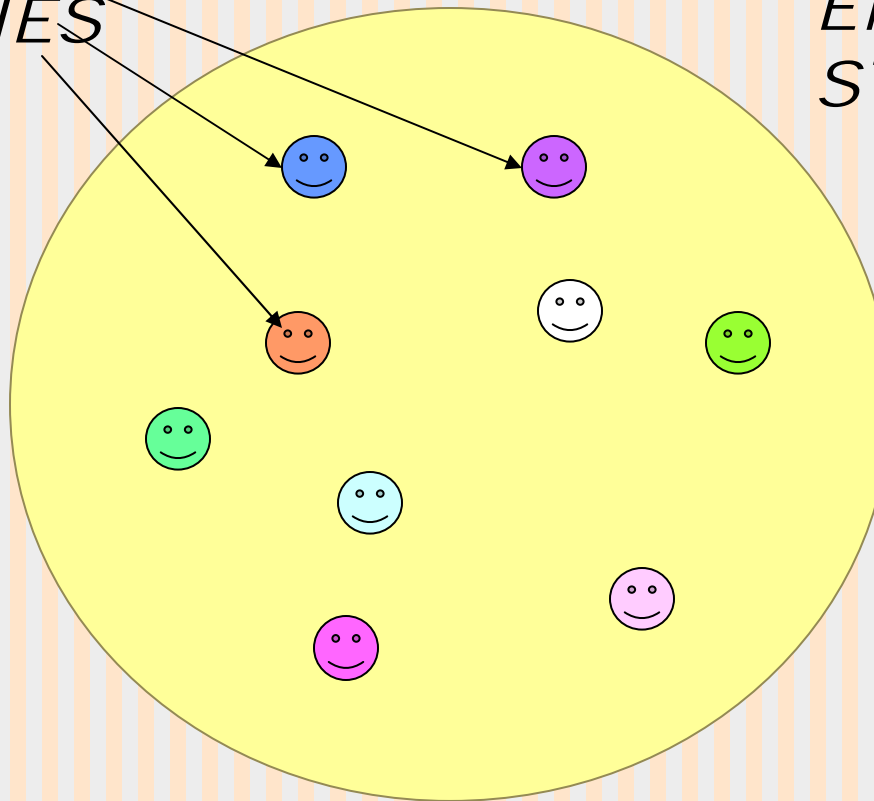
The Ecology of Human Development:
Experiments by Nature and Design,
Bronfenbrenner, Urie, 1979, Harvard
University Press, Cambridge, Mass.

A Comprehensive Approach In layman's view

*INDIVIDUAL
STRATEGIES*

*ENVIRONMENTAL
STRATEGIES*

We work to
change
conditions
within each
individual



We also need
to address
conditions in
their shared
environment

What is an example of a Universal Strategy?

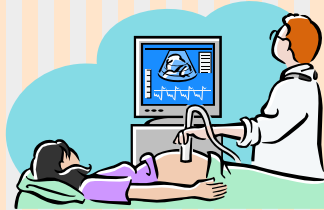
Direct

Indirect

Universal - Example



Direct



Medical practice talking to all pregnant women about dangers of alcohol



Curriculum

Indirect

Also called Environmental



Laws/Policies

Social Marketing



What is an example of a Selective Strategy?

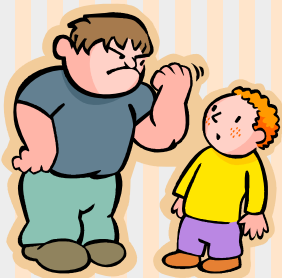
Selective - Example

Interventions that target:
Child of an Alcoholic

Example
Intervention



Living in a
high crime
environment



Being Bullied

Project SUCCESS



BASICS

What is an example of an Indicated Strategy?

Indicated – Example

Targets:

Falling grades



Fighting



Getting an
OUI/DUI

Reconnecting Youth

Diversion
Programs



PRIME for Life

Student Intervention and
Reintegration Program (SIRP)

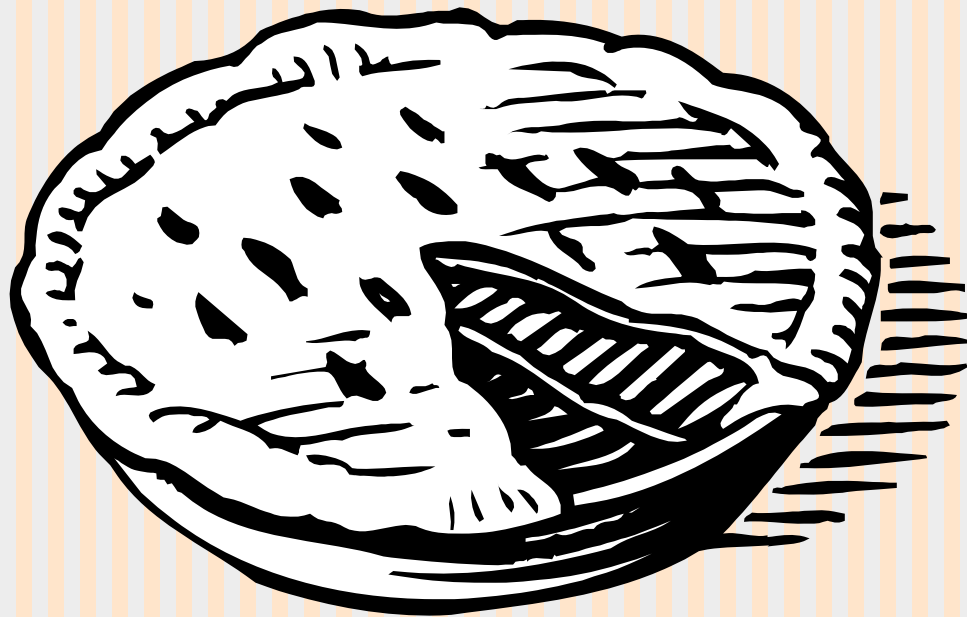
Comprehensive Planning

Individual + Environmental

<u>Focus</u>	Individual Behavior	+	Policy, Laws & Norms
<u>Goal</u>	Personal control of alcohol	+	Community control of alcohol
<u>Tools</u>	Education, treatment, small group activities	+	Media and policy advocacy and social pressure
<u>Who</u>	Professional and client Education and student	+	Coalitions, stakeholders & community organizers

POP Quiz – Question #2

What does ACPIE with S & CC stand for?



POP Quiz – Question #3

What are CSAP's Evidence-Based Strategy Definitions?

Evidence-based strategy definitions

1. Included on Federal Lists or Registries of evidence-based interventions, such as the National Registry of Evidence-Based Programs and Practices (<http://nrepp.samhsa.gov/>); **OR**
2. Reported (with positive effects) in peer-reviewed journals; **OR**
3. Documented effectiveness based on the following guidelines for evidence:

Guideline 1: The intervention is based on a solid theory or theoretical perspective that has been validated by research; **AND**

Guideline 2: The intervention is supported by a documented body of knowledge—a converging accumulation of empirical evidence of effectiveness—generated from similar or related interventions that indicate effectiveness; **AND**

Guideline 3: The intervention is judged by a consensus among informed experts to be effective based on a combination of theory, research, and practice experience. Informed experts may include key community prevention leaders, and elders or other respected leaders within indigenous cultures.

POP Quiz – Question #4

What does it mean to be based on “documented effectiveness”?

Guideline 1: The intervention is based on a solid theory or theoretical perspective that has been validated by research → **BASED ON SOLID THEORY**

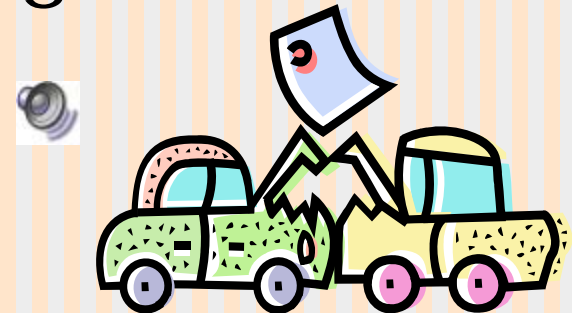
Guideline 2: The intervention is supported by a documented body of knowledge—a converging accumulation of empirical evidence of effectiveness—generated from similar or related interventions that indicate effectiveness → **SOME FORM OF POSITIVE EVALUATION CAN BE SHOWN**

Guideline 3: The intervention is judged by a consensus among informed experts to be effective based on a combination of theory, research, and practice experience. Informed experts may include key community prevention leaders, and elders or other respected leaders within indigenous cultures → **INFORMED ‘EXPERTS’ AGREE THAT THE STRATEGY IS EFFECTIVE**

POP Quiz – Question #5

Would one-shot activities meet any of the definitions of evidence based?

e.g. mock car crashes, grad nights, vision goggles and/or making examples of offenders



Example

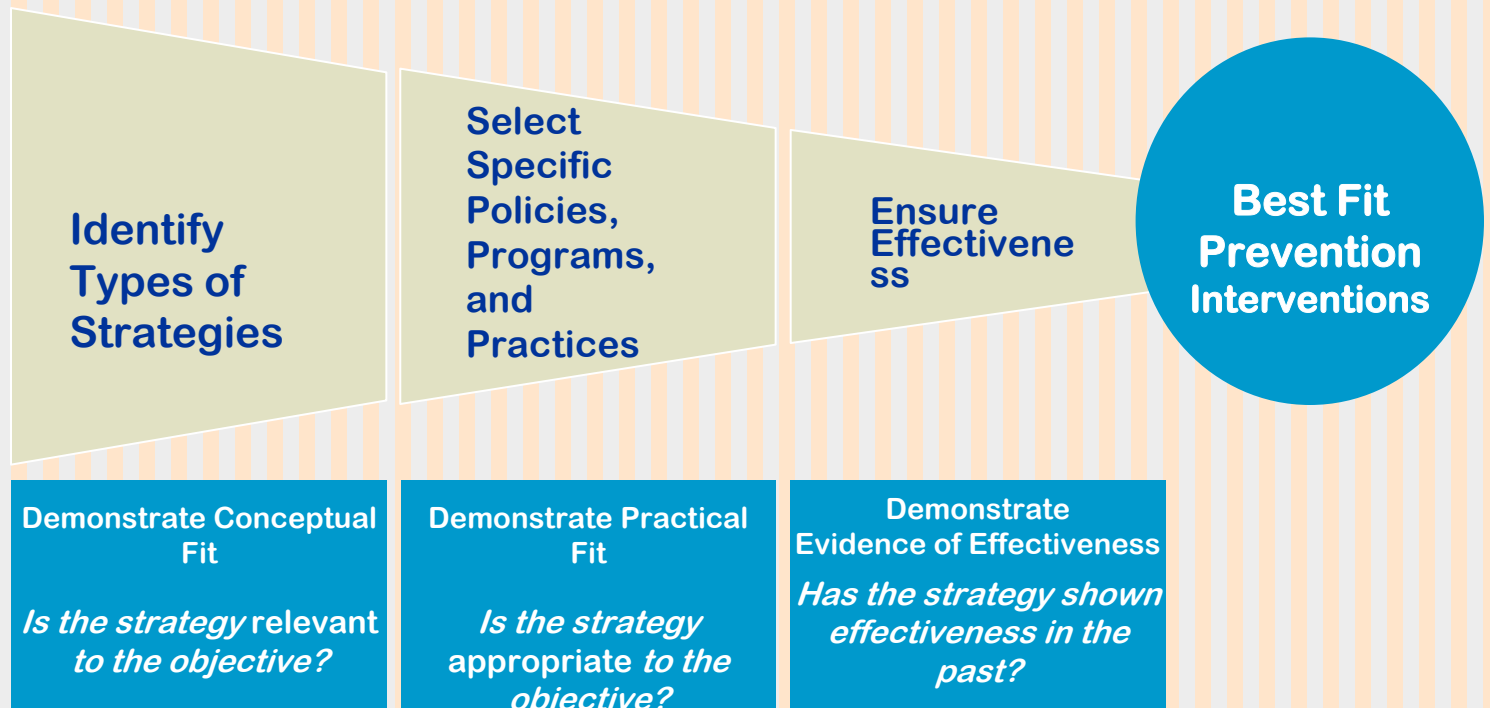
Does anyone have an example of how a 'one-shot' activity fits into a larger strategy?

POP Quiz – Question #6

What are the three components for measuring best fit in selecting a prevention strategy?

- Identify type of strategies
- Select specific policies, programs and practices
- Ensure effectiveness

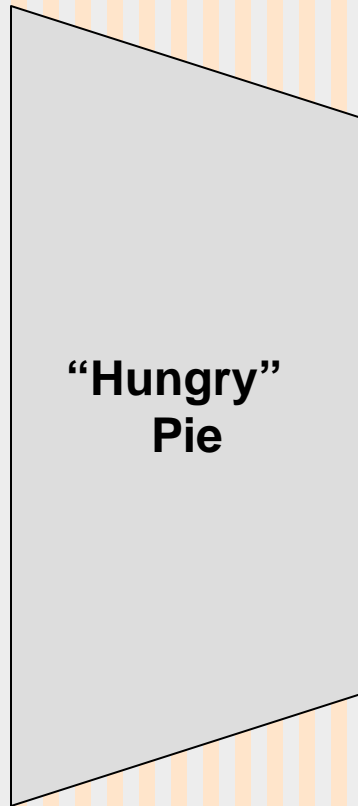
Measuring Best Fit



Measuring Best Fit

A Layman's example

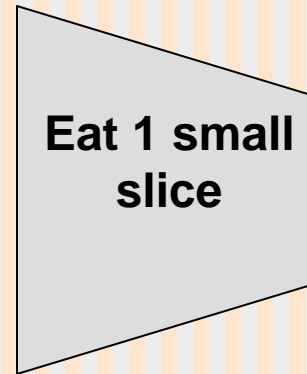
S
W
e
e
t
T
O
O
t
h



Relevant?



Practical?



Effective?



Feel satisfied
Not hungry
anymore

Small Group Activity

Logic Model Exercise

In a small group, you will fill out columns 4-8 of the logic model provided.

Note: Columns 1-3 have already been determined.

Example 1: Storeowners & Clerks

GOALS	RISK FACTORS	FOCUS POPULATION	STRATEGIES	IF - THEN	OBJECTIVES	SHORT-TERM OUTCOMES	INTERMEDIATE OUTCOMES
What is the consequence or consumption problem that needs to be changed?	What intervening variables or risk factors are driving or contributing to the problem?	Who are the people you are directly targeting with the intervention?	What strategies or programs do you want to implement? (i.e. social marketing campaign, etc)	Use the IF-THEN approach to test the logic of your strategy.	What specific indicators will show you that the strategy is being conducted as planned?	What should you see to know these strategies were implemented well? (i.e. process measures)	What are the indicators of progress on targeted objective?
Example							
Reduce underage drinking	Assessment shows 18-20 year-olds frequently buying alcohol from stores in town, and focus group participants consider it very easy to get alcohol through retail sources, since most know one or more stores that they believe will not ask for ID.	Storeowners and clerks	<p>TYPE (✓ one):</p> <p><input type="checkbox"/> Universal Direct</p> <p><input type="checkbox"/> Universal Indirect</p> <p><input type="checkbox"/> Selected</p> <p><input type="checkbox"/> Indicated</p>				

Example 2: Parents

GOALS	RISK FACTORS	FOCUS POPULATION	STRATEGIES	IF - THEN	OBJECTIVES	SHORT-TERM OUTCOMES	INTERMEDIATE OUTCOMES
What is the consequence or consumption problem that needs to be changed?	What intervening variables or risk factors are driving or contributing to the problem?	Who are the people you are directly targeting with the intervention?	What strategies or programs do you want to implement? (i.e. social marketing campaign, etc)	Use the IF-THEN approach to test the logic of your strategy.	What specific indicators will show you that the strategy is being conducted as planned?	What should you see to know these strategies were implemented well? (i.e. process measures)	What are the indicators of progress on targeted objective?
Example							
Reduce underage drinking	Assessment shows 40% of parents provide alcohol to their underage children. Focus group of parents said they would rather provide it for their children and have them drink at home then somewhere else, and that they think this is harmless.	Parents	<p>TYPE (✓ one):</p> <p><input type="checkbox"/> Universal Direct</p> <p><input type="checkbox"/> Universal Indirect</p> <p><input type="checkbox"/> Selected</p> <p><input type="checkbox"/> Indicated</p>				

Example 3: Young Adults (age 18-25)

GOALS	RISK FACTORS	FOCUS POPULATION	STRATEGIES	IF - THEN	OBJECTIVES	SHORT-TERM OUTCOMES	INTERMEDIATE OUTCOMES
What is the consequence or consumption problem that needs to be changed?	What intervening variables or risk factors are driving or contributing to the problem?	Who are the people you are directly targeting with the intervention?	What strategies or programs do you want to implement? (i.e. social marketing campaign, etc)	Use the IF-THEN approach to test the logic of your strategy.	What specific indicators will show you that the strategy is being conducted as planned?	What should you see to know these strategies were implemented well? (i.e. process measures)	What are the indicators of progress on targeted objective?
Example							
<p>Reduce alcohol related MV crashes in young adults.</p> <p>Reduce Binge Drinking in Young Adults.</p>	<p>Surveys show binge drinking rates in the 18-25 population at 42% (06 NSDUH); 34% (06 BRFSS); 52% (07 CORE). 25-28% of Young adults reported driving under the influence (06 NSDUH, BRFSS). The 2005 FARS report showed young adults have the highest rate of alcohol related crashes. YA focus groups said they drink because their friends do and it is fun.</p>	<p>Young Adults (18-25 years old)</p>	<p>TYPE (✓ one):</p> <p><input type="checkbox"/> Universal Direct</p> <p><input type="checkbox"/> Universal Indirect</p> <p><input type="checkbox"/> Selected</p> <p><input type="checkbox"/> Indicated</p>				

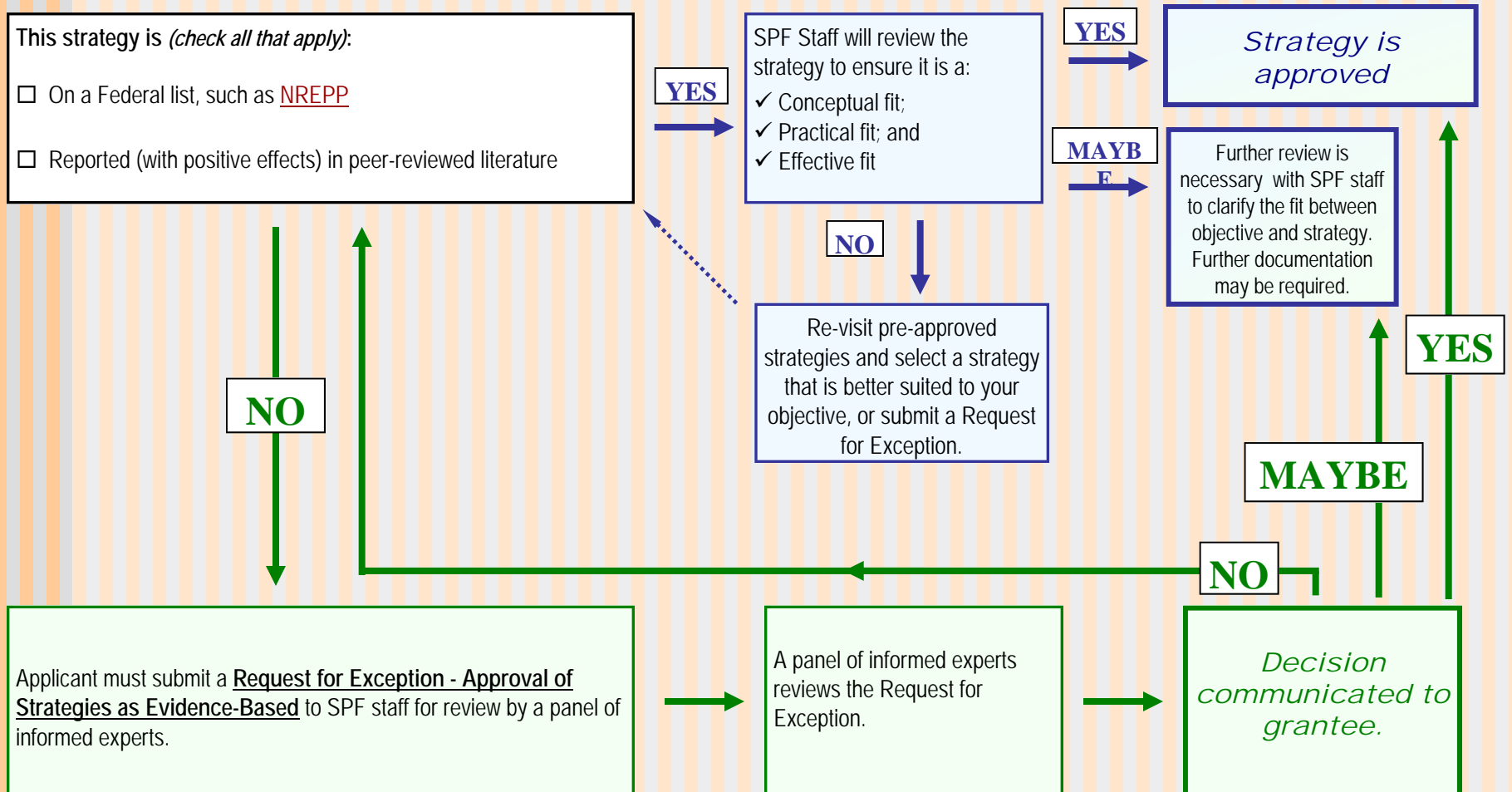
Activity Review

Group Reports

Answer the following:

1. Are the strategies selected relevant to the objective?
2. Are the strategies appropriate to the objective and focused population?
3. Have the strategies shown effectiveness?
e.g. national list
peer review journal
other

Maine and NH Approval Process



NH Exception Request Form

Page 1

What category does the strategy fit into?

This strategy is:

Universal Direct

Universal Indirect

Selected

Indicated

Goal:

Write the overall goal this strategy will address.

Risk & Protective Factor(s): (Include contributing factors)

Identify the risk or protective factor(s) and the contributing factors that this strategy will address.

Focused Population:

Who is the audience you will be targeting with this strategy?

Selected Strategy:

Name and describe the strategy.

Objective:

What is the objective you hope to achieve with the strategy (follow the 4 components of an objective and weigh it against the SMART).

NH Exception Request Form

Page 2

Why or how this strategy can be expected to achieve the objective (theoretical basis):

Attach a detailed logic model highlighting established prevention theory (e.g., ecological framework, trans-theoretical model of change)

- Describe established theory and show how the strategy applies the theory.
- Include references of empirical studies.

OR

Document how the proposed intervention is based on published principles of prevention.

- Explain how the proposed intervention incorporates and applies these principles.
- Provide references for the published principles.

Documented positive results through evaluation studies:

Document how the strategy is similar in theory, content, and structure to interventions that are considered evidence-based by scientific standards.

- Demonstrate how the similar intervention is evidence-based by using the criteria established by NREPP for the quality of research and the readiness for dissemination.

OR

Documentation that the strategy has been used by the community through multiple iterations, and its effectiveness has been demonstrated in evaluation studies.

- Document the strength of evaluation studies of the strategy, addressing all three key elements of evidence:
- The quality of the evaluation research design (ranging from randomized control trials to quasi-experiments to single group pre-to post-test designs)
- The reliability and validity of the evaluation data that was collected (with special attention to missing data, attrition, and other sources of bias)
- Ability to replicate the strategy, showing fidelity to its core components, and demonstrating positive outcomes in similar populations and contexts.

ME Application Form

to propose new strategy

APPLICATION FORM

This form must be submitted with application materials.

Name of CCHC submitting the application

Contact Information

Name:

Address:

Telephone:

E-mail:

HMP Objective:

Describe the consumption/consequence (problem) the strategy will impact.

Intervening Variables/Contributing Factors:

Describe the focus population; include cultural characteristics and environmental characteristics:

Strategy:

What type of prevention approach is the proposed strategy? (Check all that apply)

Collaboration Communication Education Enforcement Policy

Describe the philosophical framework of why this strategy can be expected to achieve the objective.

Describe the theory of how the strategy can be expected to achieve the objective.

ME Application Continued

Expected materials: (put an x next to the items included in your application packet)

Documentation that shows positive results through evaluation.

Document results must show evidence of effectiveness and be generated from similar or related interventions that indicate effectiveness.

If strategy has curriculum and/or syllabus include a full copy.

If strategy does not have curriculum or syllabus, please include a copy of the strategy's implementation plan or procedure.

Logic model to test fit. (Page 25 in OSA strategy approval guide)

Evidence based logic model (Page 26 in OSA strategy approval guide)

Copy of Syllabus or outline (if applicable)

Evaluation and tracking tools

Method

Describe the reach, dosage/intensity, duration of activities, practices, and products used by the strategy.

Will the lead person responsible for the strategy receive training on how to implement the strategy effectively? If yes, please describe in detail.

Measuring Outcomes

What short-term outcomes do you expect to see if the strategy is effective?

Do you intend to measure the success of the strategy?

Closing

This process has really taken our prevention teams time to consider, develop and present to the local grantees as part of their grant requirements. Initially, folks were resistant to having to go through the selection and approval process; however we did receive a lot of positive feedback from local grantees that this has helped them while working in a setting where historically people like to work with activities that are fun - that now there is buy in to choose appropriate strategies that lead to the intended outcomes. This has allowed them more choices for strategy selection vs. just choosing from the model program lists.

Questions/Comments???

Contact Information

Anne Rogers

(207) 287-4706

Anne.Rogers@Maine.Gov

Michelle Ricco

(603) 271-2676

mrricco@dhhs.state.nh.us

