



Colorado

Surveillance and Monitoring Supporting Substance Use Disorder Prevention

State Systems Development Program Conference

August 20-22, 2008 ♦ *Washington D.C.*



Colorado

- Brief history of surveillance – 1990's:
 - YRBS
 - SDFSC administrative mandate to collect ATOD data
 - SIG I – Colorado Kids Ignore Drugs (CKID)
 - Development of the Colorado Youth Survey (CYS),, based on the Communities That Care Survey (CTC)



Colorado

- Brief history of surveillance – 2000's:
 - Attempt to coordinate administration of YRBS, CYS and Youth Tobacco Survey (YTS)
 - Establish state-level surveillance coordinating group
 - Repository of data and data use not clearly coordinated
 - SIG II – Strategic Prevention Framework (Cohort I): establishment of EPI workgroup



Colorado

- SPF-SIG utilized existing infrastructures:
 - Leadership for the SPF-SIG are state department representatives from Prevention Leadership Council (PLC) and research partners
 - PLC and SPF funded community representatives are the SPF-SIG Advisory Council
- SPF-SIG leadership established original State Epidemiological and Outcomes Workgroup (SEOW) as required by SPF-SIG



Colorado

- The function the of the original SEOW was to assess highest need areas based on indicators of major substance abuse and related issues, as well as gaps in needed resources to assist with identifying potential SPF communities
- After the initial epi work, state data need and the role of the SEOW began to shift
- Other initiatives, such as the state Methamphetamine Task Force and Violence Prevention began requesting assistance from the SEOW



Colorado

- Colorado Prevention Leadership Council (PLC) and the Collaborative Management Program State Steering Committee (CMP-SSC):
 - Interagency collaborative groups addressing coordination, collaboration and integration of children and youth prevention, intervention and treatment services
- Priority area identified by both groups is the need for data sharing agreements across state departments to:
 - Enhance long-range integrate and comprehensive planning at state and local level
 - Improve resource utilization
 - Improve assessment of the impact of services on social and health indicators



Colorado

- Utilizing the “new” existing structure: the SEOW will expand the State Epidemiological Workgroup to areas beyond substance abuse in order to improve the utilization of data
- This expansion will support additional state priorities as well as support the original function of an epidemiological workgroup
- This expansion is called the Colorado State Data Sharing and Utilization Group (C-DSUG)



Colorado Data Sharing and Utilization Group

- An umbrella group that is a steering committee under the PLC
- Function is beyond substance abuse to include access and distribution of data and data utilization
- This group consists of individuals with vested interest in policy issues related to data sharing and utilization



C-DSUG: Primary Focus Areas

- Data-sharing workgroup
- Local profiles development workgroup, furthering alignment between state and local priorities
- Epidemiological workgroup for substance abuse and emerging trends, provide reactive data analysis to identified commissions, committees or other interagency group efforts



Data Sharing Workgroup

- Sharing data in the aggregate among agencies and systems
- Examining client level information that flows between different agencies and management information systems
 - Challenge: institutional and policy barriers, management information systems, confidentiality, data publication and reporting



Developing Data Profiles

- Explore issues of data use at the community level
- Work with selected funding sources to develop a set of prioritized indicators and related data profiles
- Challenge:
 - State agencies difficulty with funding efforts to prioritize subsets of key indicators to focus assessment, funding and evaluation
 - Communities are without sufficient guidance on how best to make use of increased access to large and diverse data sets.



Epidemiological Workgroup

- Current Epi group meets need of SPF-SIG and others (Meth, Violence, etc.)
- There is need to conduct ongoing epidemiological data collection and analysis to examine, discuss and plan around emerging issues
- Additional efforts are needed to focus on reporting of data and guide discussions of substance abuse trends
- There is a need for data analysis and reporting to various policy-related efforts and for meaningful and long-term data analysis and reporting support



Community Level Data

- Data-base development: **AS**essment of **P**revention **I**ndicator **R**esources (ASPIRE)
- A web-based data system designed to store and manage indicator and resource data
- Contains indicator data within numerous domains such as demographics, early care and education, community and civic involvement, mental health, and substance abuse and treatment.



Community Level Data

- Interactive GIS Mapping feature allows the creation of images that illustrate the distribution of indicators and resources across Colorado
- The ASPIRE system contains community and coalition assessment tools and a reporting function that organizes output in a strategic plan document



ASPIRE Example Screen: Indicator output



Introduction
Standard Data
Custom Data
Assessment
Reporting

New
Organize
Save
Cancel

Criteria

Issue Category: Crime Prevention, Intervention and En

Indicator: Adult Alcohol Violation Arrest Rate

Area: Adams
Alamosa
Arapahoe
Archuleta

Year From: 1990

Year To: 1995

[Generate Query](#)

Cluster

*You must select a valid cluster

Cluster: Cluster for QRAID9 [Create Cluster](#)

Year: 2008

[Edit Map](#)

[Edit Chart](#)

Data
Map
Chart

Results:

AreaName	1990	1991	1992	1993	1994	1995
Adams	2942.94	2707.24	1780	1649.01	1691.52	958.43
Alamosa	2116.18	2496.39	2388.58	2408.77	2361.25	1499.61
Arapahoe	2360.55	2250.21	1909.9	1874.79	1813.77	1236.47
Boulder	2320.18	1842.66	1940.41	1917.55	1905.71	1667.2
Denver	2379.04	2081.42	1621.25	1818.2	2222.26	1960.8
El Paso	1947.39	1856.15	1780	1804.71	1695.23	296.69

Counts:

AreaName	1990	1991	1992	1993	1994	1995
Adams	5542	5255	3556	3407	3618	2132
Alamosa	204	242	231	235	234	152
Arapahoe	6757	6609	5815	5846	5778	3997
Boulder	4033	3274	3559	3649	3707	3305
Denver	8669	7705	6168	7104	8735	7762
El Paso	5608	5454	5448	5711	5603	1009

[Save Query](#)



ASPIRE Example Screen: Indicator output



Introduction Standard Data Custom Data Assessment Reporting

New Organize Save Cancel

Data Map Chart

Criteria

Issue Category: Crime Prevention, Intervention and Er

Indicator: Adult Alcohol Violation Arrest Rate

Area: Adams, Alamosa, Arapahoe, Archuleta

Year From: 1990

Year To: 1995

[Generate Query](#)

Cluster

*You must select a valid cluster

Cluster: Cluster for QRAID9 [Create Cluster](#)

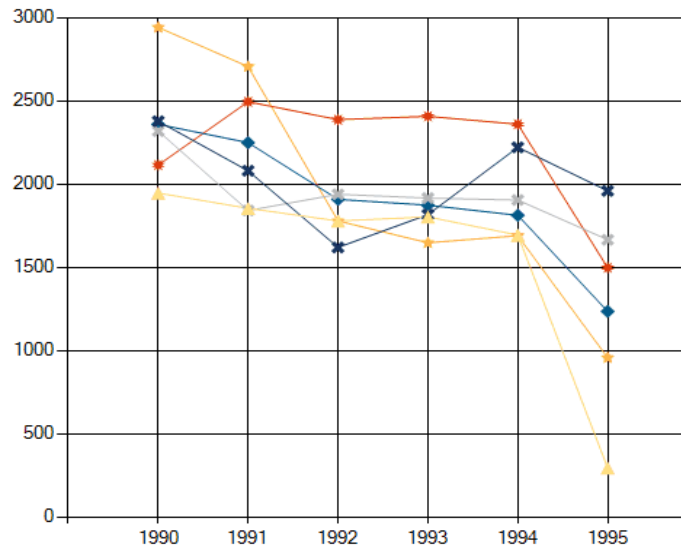
Year: 2008

Edit Map

Edit Chart

[Save Query](#)

This is the Title



This is the Legend Title

- Adams
- Alamosa
- Arapahoe
- Boulder
- Denver
- El Paso



ASPIRE Example Screen: Indicator output



DFC Introduction Standard Data Custom Data Assessment Reporting

New Organize Save Cancel

Criteria

Issue Category: Basic Needs

Indicator: Average Wage

Area: Adams, Alamosa, Arapahoe, Archuleta

Year From: 1988

Year To: 1993

[Generate Query](#)

Cluster

*You must select a valid cluster

Cluster: (Select Available Clusters) [Create Cluster](#)

Year: 2008

[Edit Map](#)

[Edit Chart](#)

Data Map Chart

Legend of Bagger Vance

- 13,000 - 14,000
- 14,000 - 17,000
- 17,000 - 21,000
- 21,000 - 25,000
- 25,000 - 30,000

[Save Query](#)



ASPIRE Example Screen: Resource output



DFC Introduction Standard Data Custom Data Assessment Reporting

New Query Organize Save Cancel

Criteria

Issue Category: Education

Issue: Literacy

Agency:

- Colorado Department of Education Even Start Family Literacy
- Colorado Department of Education, Center for At-Risk Education Even Start Family Literacy

Area:

- Alamosa
- Boulder
- Denver
- Fremont
- Jefferson
- Las Animas

Year: 2003

[Generate Query](#)

Cluster

Edit Map

Data Map Chart

Record has not been verified.

Record cannot be mapped.

ID	Agency	Program	Funding Stream	Area	Amount	Administrator	Year	Legend	POIINT_Y	POIINT_X
1	Arapahoe County 28J - Adams-Arapahoe School District (Aurora Public Schools)	Even Start Family Literacy Program	Even Start Family Literacy	Denver	175000	Colorado Department of Education	2003		39.7422065734863	-104.831092834473
2	Boulder Valley Family Literacy	Even Start Family Literacy Program	Even Start Family Literacy	Boulder	155000	Colorado Department of Education	2003		40.0144958496094	-105.214447021484
3	El Paso County Centers for Family Learning	Even Start Family Literacy Program	Even Start Family Literacy	Fremont	107100	Colorado Department of Education	2003		38.825065612793	-104.807998657227
4	La Plata County 9-R - Durango School District	Even Start Family Literacy Program	Even Start Family Literacy	San Juan	165000	Colorado Department of Education	2003		37.2761993408203	-107.878578186035
5	Metropolitan State College of Denver Families Learning Together at Remington	Even Start Family Literacy Program	Even Start Family Literacy	Jefferson	80000	Colorado Department of Education	2003		39.7773284912109	-105.004547119141
6	Roaring Fork Valley Even Start	Even Start Family Literacy Program	Even Start Family Literacy	Rio Blanco	155000	Colorado Department of Education	2003		39.5462989807129	-107.324638366699
7	San Luis Valley Even Start	Even Start Family Literacy	Even Start Family Literacy	Alamosa	155000	Colorado Department of Education	2003		37.4639472961426	-105.865623474121



ASPIRE Example Screen: Resource output



Introduction Standard Data Custom Data Assessment Reporting

New Query Organize Save Cancel

Criteria

Issue Category:
Education

Issue:
Literacy

Agency:

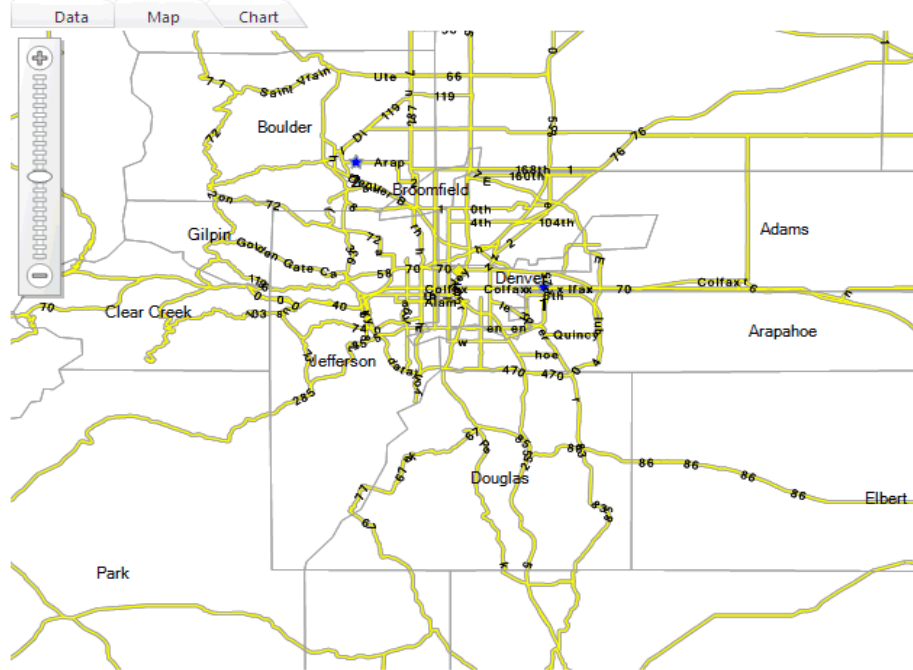
- Colorado Department of Education Even Start Family Literacy
- Colorado Department of Education, Center for At-Risk Education Even Start Family Literacy

Area:

- Alemtosa
- Boulder
- Denver
- Fremont
- Jefferson
- Las Animas

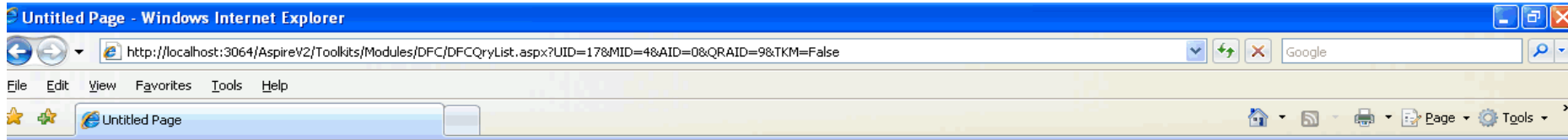
Year: 2003

[Generate Query](#)





ASPIRE Example Screen: Cluster Management



Introduction Standard Data Custom Data Assessment Reporting

New Query Organize

Cluster Name	Title	Cluster Name	Type	Shared	Mod Date	Year	
Cluster Name: Cluster #2 for 9							
Edit/View	New Query for Mapping	Cluster #2 for 9	Standard Resource	<input type="checkbox"/>	6/19/2008 1:44:38 PM	2008	Delete
Edit/View	Indicator Map Test	Cluster #2 for 9	Standard Indicator	<input type="checkbox"/>	6/19/2008 6:19:57 PM	2008	Delete
Cluster Name: Cluster for 9							
Edit/View	Community and Civic 1997	Cluster for 9	Standard Indicator	<input checked="" type="checkbox"/>	6/19/2008 2:41:15 PM	2008	Delete
Cluster Name: Cluster for QRAID9							
Edit/View	QRAID 9 Testing	Cluster for QRAID9	Standard Resource	<input type="checkbox"/>	6/5/2008 7:43:17 AM	2008	Delete
Edit/View	New Map Query	Cluster for QRAID9	Standard Resource	<input checked="" type="checkbox"/>	6/19/2008 12:19:11 PM	2008	Delete
Edit/View	New Map Query	Cluster for QRAID9	Standard Resource	<input type="checkbox"/>	6/19/2008 12:39:03 PM	2008	Delete
Edit/View	New Map zoomed	Cluster for QRAID9	Standard Resource	<input type="checkbox"/>	6/19/2008 1:24:03 PM	2008	Delete



ASPIRE Example Screen: Annotation of Queries



DFC Introduction Standard Data Custom Data Assessment Reporting

Save Report Complete Cancel

Pre-School and Kindergarden 2008

Cluster for QRAID9

QRAID 9 Testing	Standard Resource	<input checked="" type="checkbox"/> Chart <input type="checkbox"/> Map <input checked="" type="checkbox"/> Data Table(s)
<input type="text"/>		
New Map Query	Standard Resource	<input checked="" type="checkbox"/> Chart <input type="checkbox"/> Map <input type="checkbox"/> Data Table(s)
<input type="text"/>		
New Map Query	Standard Resource	<input type="checkbox"/> Chart <input type="checkbox"/> Map <input checked="" type="checkbox"/> Data Table(s)
<input type="text"/>		
New Map zoomed	Standard Resource	<input checked="" type="checkbox"/> Chart <input type="checkbox"/> Map <input type="checkbox"/> Data Table(s)
<input type="text"/>		

Cluster Summary:
This cluster demonstrates the need for additional testing of the Aspire product.

Community Summary:
There is not summary because this is testing

Cluster for 9



ASPIRE Example Screen: Opening output within a cluster query

Cluster #2 for 9

New Query for Mapping Standard Resource Chart Map Data Table(s)

Legend Title

- 0 - 1,000
- ▲ 1,000 - 10,000
- ◆ 10,000 - 100,000
- ★ 100,000 - 1,000,000

Resource Results

Agency	Program	Funding Stream	Area	Year	Amount
Metropolitan State College of Denver Families Learning Together at Remington	Even Start Family Literacy Program	Even Start Family Literacy	Jefferson	2003	80000
El Paso County Centers for Family Learning	Even Start Family Literacy Program	Even Start Family Literacy	Fremont	2003	107100
Boulder Valley Family Literacy	Even Start Family Literacy Program	Even Start Family Literacy	Boulder	2003	155000
San Luis Valley Even Start	Even Start Family Literacy Program	Even Start Family Literacy	Alamosa	2003	155000
Arapahoe County 28J - Adams-Arapahoe School District (Aurora Public Schools)	Even Start Family Literacy Program	Even Start Family Literacy	Denver	2003	175000

Indicator Map Test Standard Resource Chart Map Data Table(s)



ASPIRE Example Screen: Annotations of clusters



Introduction Standard Data Custom Data Assessment Reporting

Save Report Complete Cancel

Pre-School and Kindergarden 2008

Cluster for QRAID9

Cluster Summary:

Community Summary:

Cluster for 9

Cluster Summary:

Community Summary:

Cluster #2 for 9

Cluster Summary:

Community Summary:



ASPIRE Example Screen: Report Management



Introduction Standard Data Custom Data Assessment Reporting

New Report Complete Cancel

ReportTitle		Year	Shared	Committed	MaxMod	
View	Edit new Report for maps	2008	<input type="checkbox"/>	In Progress...	6/19/2008 9:02:25 PM	Delete
View	Edit Pre-School and Kindergarden 2008	2008	<input type="checkbox"/>	Completed	6/20/2008 10:40:25 AM	Delete



Community Level Data

- Data availability through ASPIRE
- Assistance from C-DSUG for local level profiles
- Training and technical assistance available to communities through the Regional Prevention System



C-DSUG Development

- Data sharing
- Survey coordination and data use: local and state level
- Maintaining, upgrading and improving ASPIRE



Colorado

Contact information:

Stan Paprocki
Director of Prevention Services
Colorado Department of Human Services
Division of Behavioral Health
303-866-7503
stan.paprocki@state.co.us